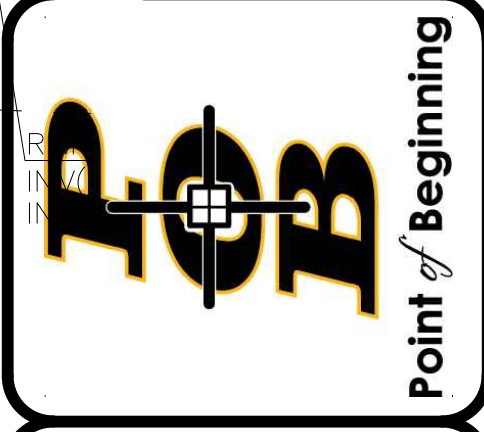


REVISIONS	
CHECKED: SRG	
DRAWN: DLP	
DATE: 8/16/2018	
PROJECT NO. 18.055	

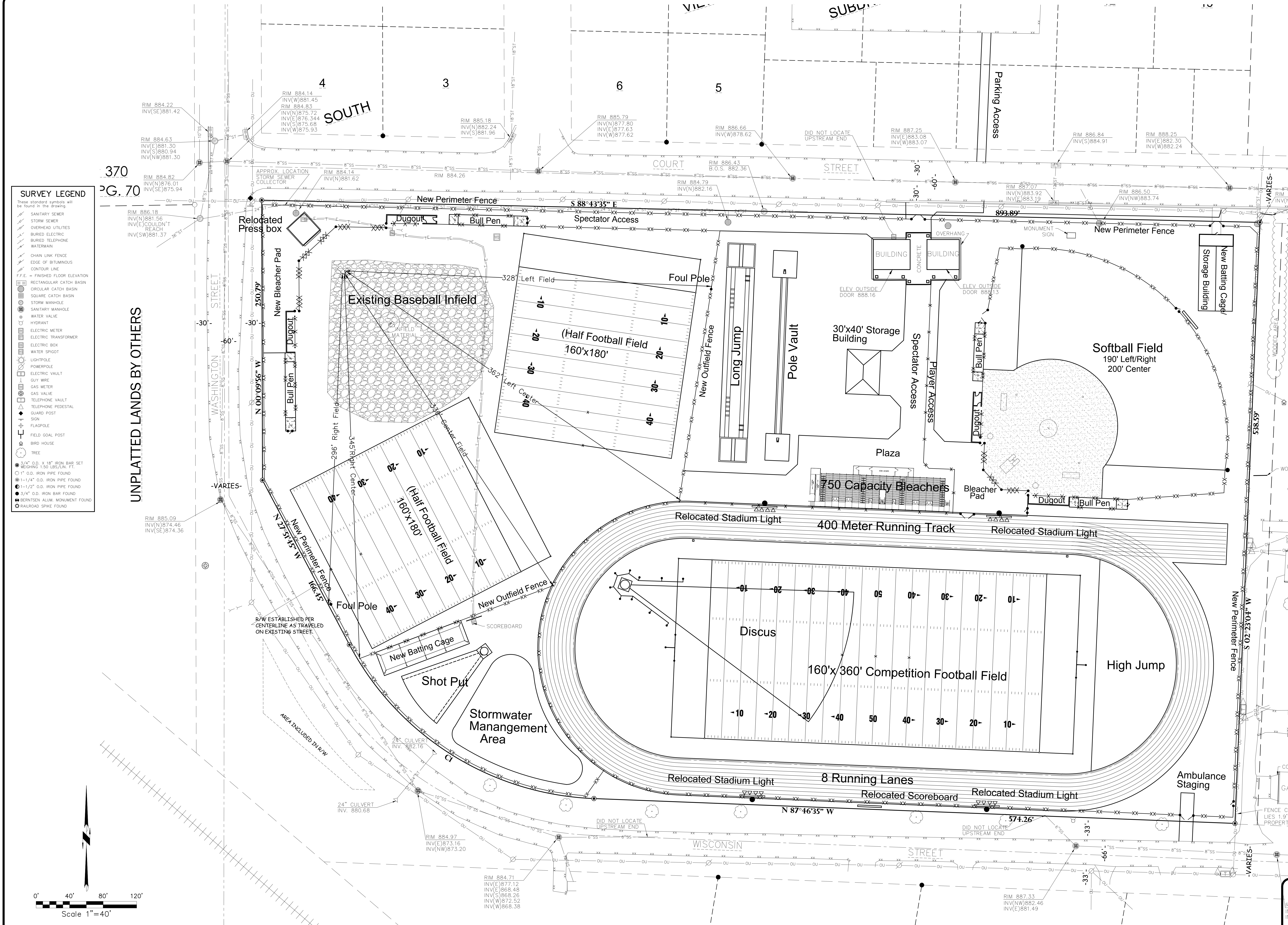
SITE LAYOUT PLAN

**NEW LISBON SCHOOL DISTRICT
ATHLETIC FIELD IMPROVEMENTS
CITY OF NEW LISBON
JUNEAU COUNTY, WISCONSIN**

Civil Engineering
Land Surveying
Landscape Architecture
5709 Windy Drive, Suite D
Stevens Point, WI 54482
715.344.9999 (F) / 715.344.9922 (F)



C2.0



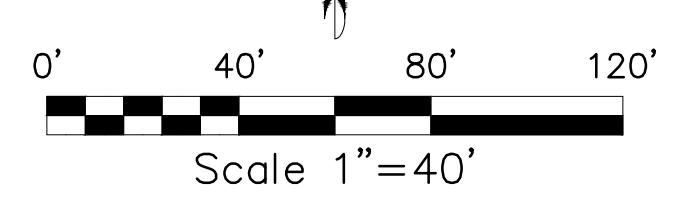
SURVEY LEGEND

These standard symbols will be found in this drawing:

- SANITARY SEWER
- STORM SEWER
- OVERHEAD UTILITIES
- BURIED ELECTRIC
- BURIED TELEPHONE
- WATER MAIN
- CHAIN LINK FENCE
- EDGE OF BITUMINOUS
- CONTOUR LINE
- F.F.E. - FINISHED FLOOR ELEVATION
- RECTANGULAR CATCH BASIN
- CIRCULAR CATCH BASIN
- SQUARE CATCH BASIN
- STORM MANHOLE
- SANITARY MANHOLE
- WATER VALVE
- HYDRANT
- ELECTRIC METER
- ELECTRIC TRANSFORMER
- ELECTRIC BOX
- WATER SPIGOT
- LIGHTPOLE
- POWERPOLE
- ELECTRIC VAULT
- CUI WIRE
- GAS METER
- GAS VALVE
- TELEPHONE VAULT
- TELEPHONE PEDESTAL
- GUARD POST
- FLAGPOLE
- FIELD GOAL POST
- BIRD HOUSE
- TREE

3/4" O.D. X 18" IRON BAR SET WEIGHING 1.50 LBS/LIN. FT.
 1" O.D. IRON PIPE FOUND
 1-1/4" O.D. IRON PIPE FOUND
 1-1/2" O.D. IRON PIPE FOUND
 3/4" O.D. IRON BAR FOUND
 BERNTSEN ALUM. MONUMENT FOUND
 RAILROAD SPIKE FOUND

UNPLATTED LANDS BY OTHERS



CURVE DATA TABLE

CURVE	ARC LENGTH	RADIUS	DELTA ANGLE	CHORD BEARING	CHORD LENGTH
CI	270.83'	259.00'	59°54'49"	N 57°49'10" W	258.66'

POINT OF BEGINNING, INC. HOLDS THE RIGHTS TO COPYRIGHT IN AND TO THESE PRINTS, DRAWINGS AND DOCUMENTS. NO REPRODUCTION, COPYING, ALTERATION, MODIFICATION, USAGE, INCORPORATION INTO OTHER DOCUMENTS OR AGREEMENT OF THE SAME MAY OCCUR WITHOUT THE PRIOR WRITTEN PERMISSION OF POINT OF BEGINNING, INC.